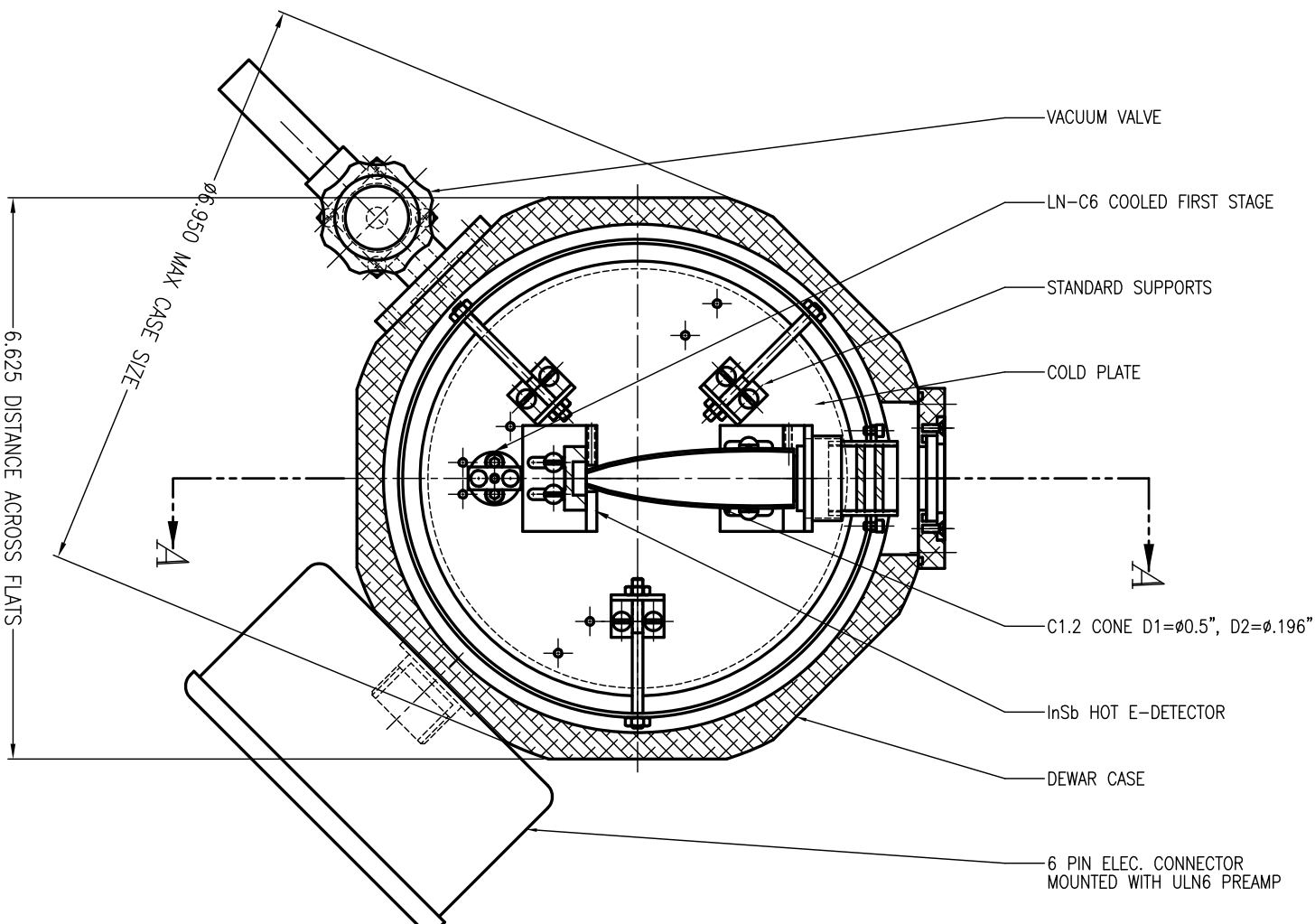


SECTION VIEW A-A



SECTION VIEW B-B

- 4) USE NWN-5 WINDOW FLANGE
- 3) USE .006 WALL ON NECK TUBE.
- 2) COUNTERBORE 8-32 CASE SCREWS INTO DEWAR BOTTOM COVER.

- 1) DIMENSIONS SHOWN ARE WHEN DEWAR IS COLD.
DIMENSIONS WHEN WARM ARE AS FOLLOWS:
DIM "A" = .625
DIM "B" = 1.812

NOTES:

IMPORTANT
PROPRIETARY
 USE OR DISCLOSURE OF DATA CONTAINED
 ON THIS SHEET IS BY PERMISSION
 OF INFRARED LABORATORIES ONLY
NOTICE

UNLESS OTHERWISE SPECIFIED		INFRARED LABORATORIES INC	
DIMENSIONS ARE IN INCHES		InSb Hot e-detector	
TOLERANCES ON: ANGLES ±0° 30'			
DECIMALS .XX ±.01 XXX ±.005			
BREAK SHARP EDGES	DATE 11/24/97	INFRARED LABORATORIES, INC.	
FILLET RADIUS R	CHECKED BY R.Schickling	1808 E. 17th STREET	
✓ PER ANSI B46.1	ENGINEER	TUCSON, ARIZONA 85719 USA	
MODEL HDL-5	APPROVED	SIZE D	REV. A
MATERIAL ALUM.	DATE	DRAW NO. NOGG10MA	
FINISH GOLD ANODIZE	DATE	3051	
STATUS ACTIVE	DATE	SCALE 1:1	SHEET 1 OF 1